

# Graphic Inspector 2 User Guide

<a href="#">Installation &amp; System Requirements</a>	2
<a href="#">Scanning Files and Folders</a>	2
<a href="#">Checkup Presets</a>	3
<a href="#">File Table and Info Panel</a>	4
<a href="#">Export Data</a>	5
<a href="#">Support</a>	6



## INSTALLATION AND SYSTEM REQUIREMENTS

### Installation

Place the Graphic Inspector folder into your Applications folder.

### System Requirements

Mac OS X 10.7 "Lion" or later

*An earlier version for Mac OS X 10.5–10.6 is also available*

## SCANNING FILES AND FOLDERS

You can initiate the scanning in several ways:

–Drag and drop files/folders on the Graphic Inspector icon in the Finder or Dock,

–Drag and drop files/folders on Graphic Inspector's file table,

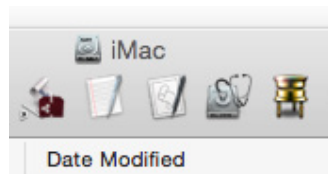
–Use the Open menu (⌘-O)

–Select a folder in the Graphic Inspector sidebar and click the 'Scan Folder' button. The sidebar contains the system folder tree, favorite folders and folders currently open in the Finder.

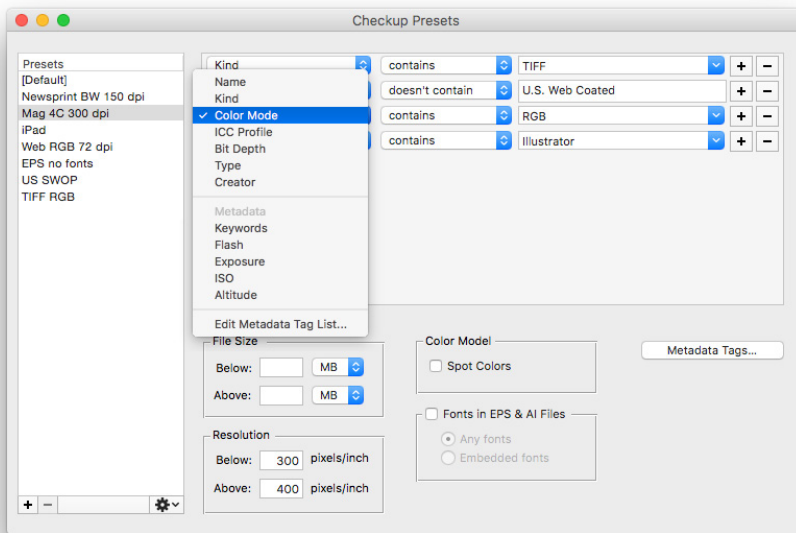
Check the 'Scan Subfolders' button to make Graphic Inspector scan all subfolders of every folder it scans.


### **TIP:**

It's a good idea to keep the Graphic Inspector icon in your Finder toolbar – it makes it easier and faster to drag and drop files and folders on the icon from any location.



## CHECKUP PRESETS



When Graphic Inspector scans files, it can warn you about files that possess (or don't possess) certain attributes. You specify the warning conditions in the Checkup Presets window. The files that meet the conditions will be flagged with the warning sign .

To open the Checkup Presets window, click the Checkup Presets button or use the File > Checkup Presets menu ( $\text{⌘}\text{⌘}\text{-P}$ ).

Click the [+ ] button below the Presets list to create a new preset. Double-click (or click and hold) the preset name to edit.

Click the [- ] button to delete the selected preset.

Use the [+ ] button in the conditions list to add new checkup conditions.

For example if you specify "Contains EPS" condition for the Kind attribute, Graphic Inspector will flag any file whose Kind contains the string "EPS". It means that all files whose Kind is "EPS JPEG", "Photoshop EPS", "FreeHand EPS" etc will be flagged.

You can export all checkup presets and import them back from exported files using the 'gear' popup menu.

The list of available presets appears in the Checkup Preset pop-up menu of the Graphic Inspector window. Click the menu to select the preset you want to use to scan your files.

### Metadata Tags

You can specify metadata tags you wish to search for specific values. Click the "Edit Metadata Tag List" menu or "Metadata Tags" button in the Checkup Presets window.

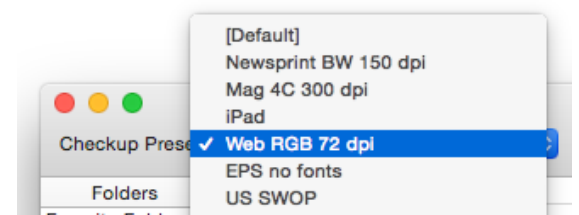
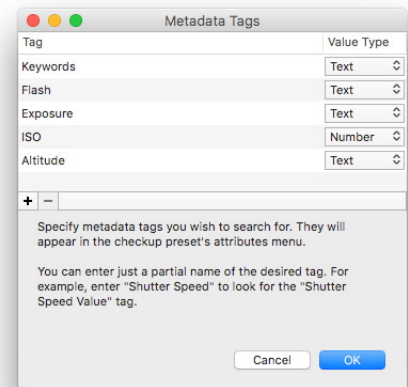
Use the +/- buttons in the Metadata Tags window to add/delete the tags.

You don't have to type the exact metadata tag name: partial string is enough. For example, if you wish to search for the "Original Transmission Reference" tag you can type just "Original Transmission" or "Transmission Reference" etc.

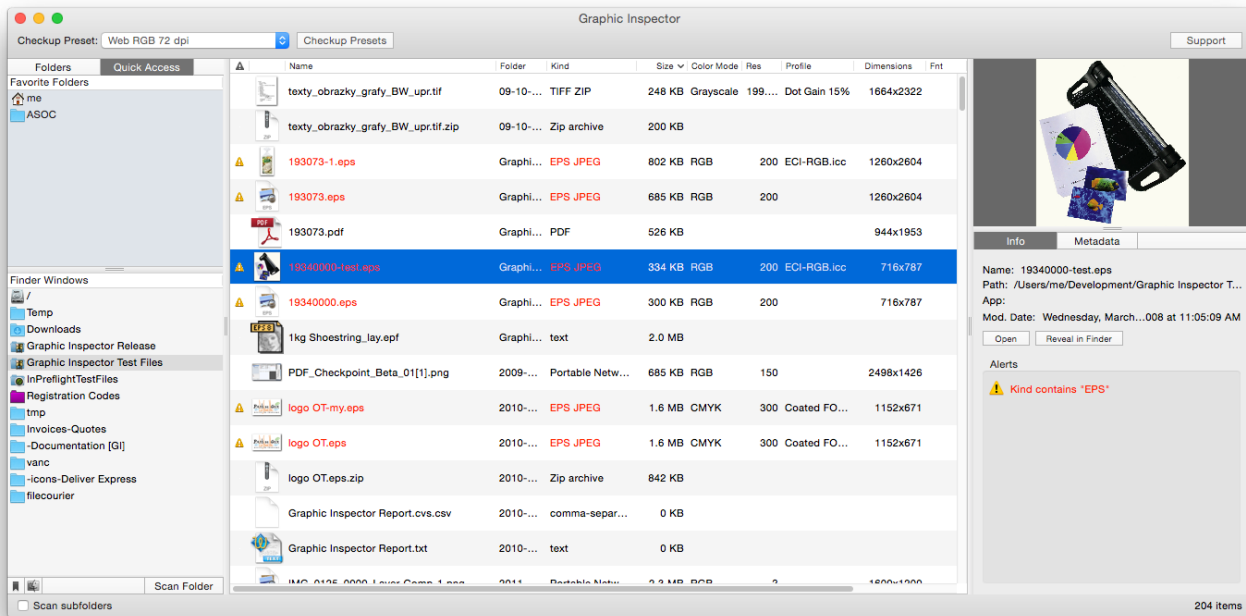
Choose the value type for each tag (Text or Number). The value type will define the search operator for the tag (such as "contains" or "is equal"). If you're unsure what value type is associated with the desired tag, it's best to run a test with an image and see how its metadata is reported in Graphic Inspector.

### NOTE:

Graphic Inspector will flag files that satisfy any of the checkup preset conditions. For example, if you specify "Kind Contains EPS" and "Resolution > 200 dpi" conditions, any file whose kind contains EPS will be flagged, as well as any file whose resolution is higher than 200 dpi.



## FILE TABLE AND INFO PANEL



### The File Table Columns

**Warning signs** ⚠️ for files with attributes flagged as per the current `checkup_preset`.

**Image:** File name.

**Folder:** The name of the folder in which the file resides.

**Kind:** File kind. The following abbreviations are used for some file formats and their attributes:

TIFF LZW/JPEG/ZIP: TIFF with respective type of compression

EPS JPEG: Photoshop EPS with JPEG compression

EPS DCS: Photoshop EPS DCS (Desktop Color Separation) file

PSD – Adobe Photoshop native file

.ai – Adobe Illustrator file

**Size:** File size

**Mode:** Color mode of raster images and Illustrator (.ai and .eps) files.

**Res:** Resolution of raster images (dpi).

**Profile:** The name of embedded color profile (if any).

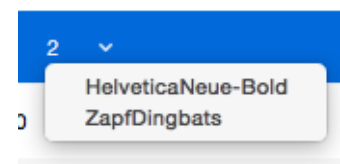
**Font:** Number of fonts in vector EPS and native Illustrator files. Click the arrow near the number for the list of fonts.

E – denotes embedded fonts in Illustrator EPS files.

**Col:** Number of spot colors in vector EPS, native Illustrator, Photoshop Duotone and Photoshop DCS (Multichannel) files. Click the arrow near the number for the list of fonts..

**Type:** File type.

**Creator:** File creator.




## THE SIDEBAR

The sidebar contains the system folder tree, Graphic Inspector favorite folders and folders currently open in the Finder.

 Add the selected folder to Favorites. You can add folders from the Folders tree and the list of Finder Windows.

 Remove the selected folder from Favorites.

 Reveal the selected folder in the Finder.

 Scan Folder Scan selected folder.

## EXPORT DATA

You can export the current checkup results into a file in the tab-delimited text format (File > Export Data menu).

## SUPPORT

Please send e-mail to [support@zevrix.com](mailto:support@zevrix.com) with any:

- problem reports,
- questions,
- comments,
- feature requests,
- suggestions,
- other feedback.

Production: Leo Revzin

Thank you to all beta-testers who participated in the project. Your help is greatly appreciated.

**[www.zevrix.com](http://www.zevrix.com)**

Copyright ©2007–2017 Zevrix Solutions. All Rights Reserved.

THIS SOFTWARE IS PROVIDED BY THE COPYRIGHT HOLDERS AND CONTRIBUTORS "AS IS" AND ANY EXPRESS OR IMPLIED WARRANTIES, INCLUDING, BUT NOT LIMITED TO, THE IMPLIED WARRANTIES OF MERCHANTABILITY AND FITNESS FOR A PARTICULAR PURPOSE ARE DISCLAIMED. IN NO EVENT SHALL THE COPYRIGHT OWNER OR CONTRIBUTORS BE LIABLE FOR ANY DIRECT, INDIRECT, INCIDENTAL, SPECIAL, EXEMPLARY, OR CONSEQUENTIAL DAMAGES (INCLUDING, BUT NOT LIMITED TO, PROCUREMENT OF SUBSTITUTE GOODS OR SERVICES; LOSS OF USE, DATA, OR PROFITS; OR BUSINESS INTERRUPTION) HOWEVER CAUSED AND ON ANY THEORY OF LIABILITY, WHETHER IN CONTRACT, STRICT LIABILITY, OR TORT (INCLUDING NEGLIGENCE OR OTHERWISE) ARISING IN ANY WAY OUT OF THE USE OF THIS SOFTWARE, EVEN IF ADVISED OF THE POSSIBILITY OF SUCH DAMAGE.

All trademarks mentioned in this document and any part of the software itself are the properties of their respective owners.